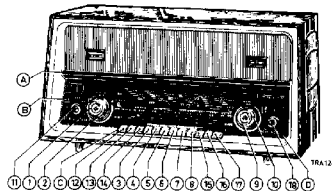


# SERVICE NOTES

## RADIO

5220A/00/01



Controls		Bediening	Bedienung	Commande		Mandos
Volume control	1	Volumeregelaar	Lautstärkereglér	Contrôle de volume	1	Control de volumen
Balance control	2	Balanseregelaar	Balanceregler	Contrôle de balance	2	Control de balance
Mains switch	3	Netschakelaar	Netzschalter	Comm. de réseau	3	Comm. de red
LW switch	4	LG-schakelaar	LW-Schalter	Comm. de GO	4	Comm. de OL
SW switch	5	KG-schakelaar	KW-Schalter	Comm. de OC	5	Comm. de OC
MW switch	6	MG-schakelaar	MW-Schalter	Comm. de PO	6	Comm. de OM
PU switch	7	PU-schakelaar	TA-Schalter	Comm. de PU	7	Comm. de PU
FM switch	8	FM-schakelaar	UKW-Schalter	Comm. de FM	8	Comm. de FM
Tuning	9	Afstemming	abstimmung	Syntonisation	9	Sintonía
Ferroceptor	10	Ferroceptor	Ferroceptor	Ferrocepteur	10	Ferroceptor
Bass control	11	Lage-tonenregelaar	Bassregler	Contr. des graves	11	Control de bajas
Tone switches	12-17	Toonschakelaars	Tonschalter	Comm. de tonalité	12-17	Comm. de tonalidad
Treble control	18	Hoge-tonenregelaar	Höhenregler	Contr. de aigus	18	Control de altas

Specification		Specificatie	Spezifikation	Spécification		Especificación
Loudspeaker	2xAD 3700 M (800Ω)	Luidspreker	Lautsprecher	Haut-parleur	2xAD 3700 M (800Ω)	altavoz
IF	452 kc/s (AM) 10,7 Mc/s (FM)	MF	ZF	FI	452 kc/s (AM) 10,7 Mc/s (FM)	FI
Mains voltages	127-150-220 - 240 V	Netspanningen	Netzspannungen	Tensions de réseau	127-150-220-240 V	Tensiones de red
Consumption	70 W (220 V)	Verbruik	Verbrauch	Consommation	70 W (220 V)	Consumo
Dimensions	604x312x250 mm	Afmetingen	Abmessungen	Dimensions	604x312x250 mm	Dimensiones
FM unit	JR 093 03	FM-eenheid	UKW-Einheit	Unité FM	JR 093 03	Unidad FM

Wave ranges - Golfgebieden - Wellenbereiche - Gamme d'ondes - Márgenes de ondas

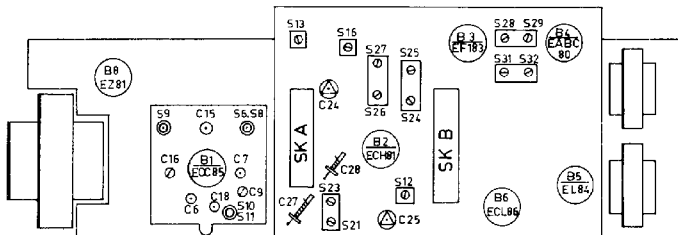
LW - LG - LW - GO - OL :	1070 - 1940	m ( 281 - 155	kc/s)
MW - MG - LW - PO - OM :	185 - 589	m (1620 - 517	kc/s)
SW - KG - KW - OC - OG :	25 - 51	m ( 12 - 5,88	Mc/s)
FM - FM - UKW - FM - FN :	2,88- 3,43	m ( 104 - 87,5	Mc/s)

Valves - Buizen - Röhren - Tubes - Válvulas

31 - 20C85	B6 - ECL86
32 - ECH81	B7 - EM84
33 - EF183	B8 - EZ81
B4 - EABC80	L1,2 - 955/26, 5x320
B5 - EL84	L3,4 - 955/26, 3x320

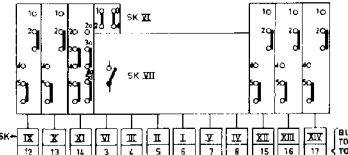
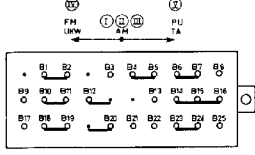
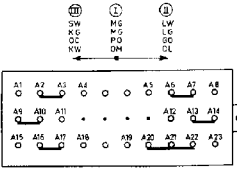
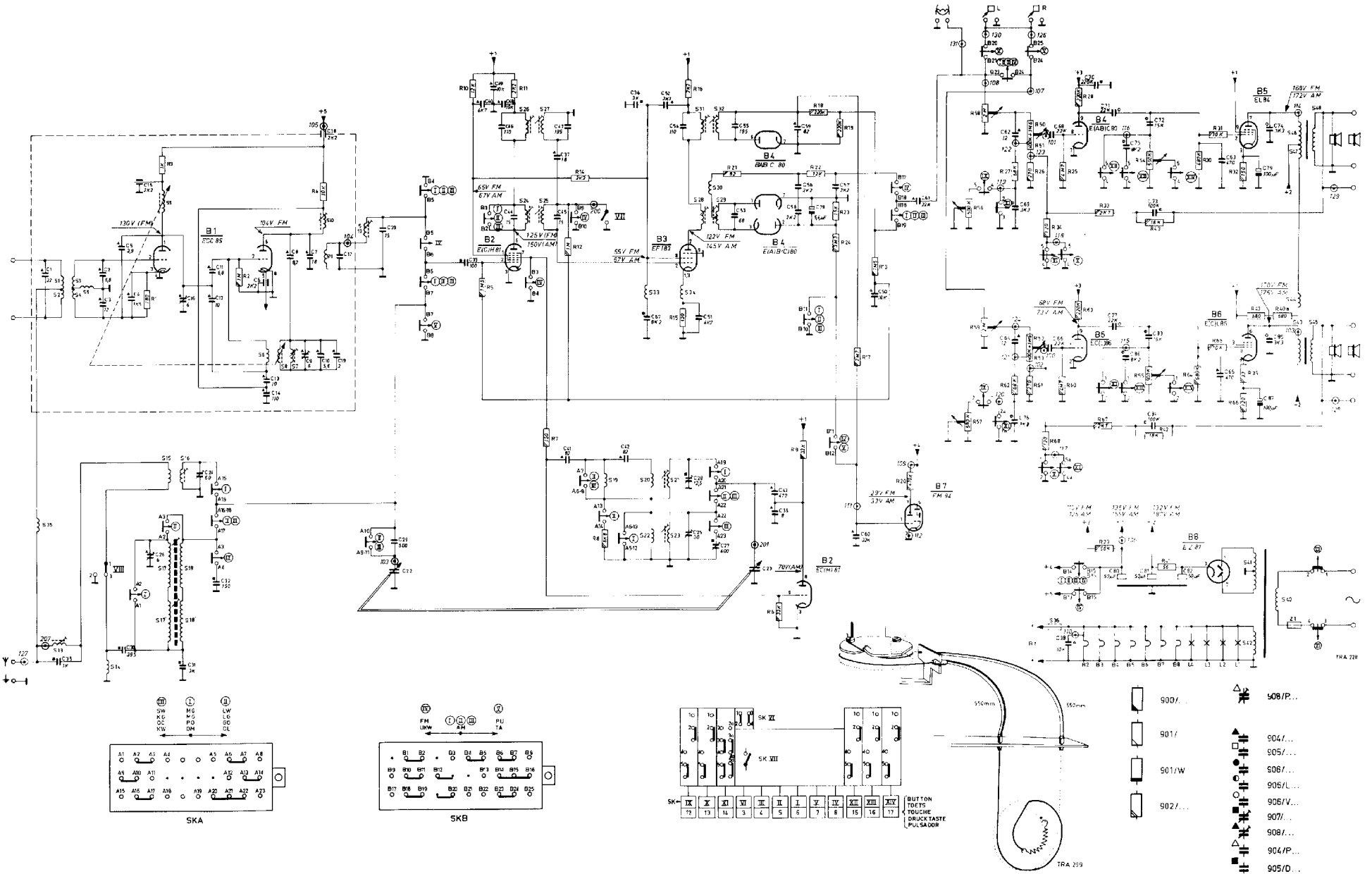
SERVICE INFORMATION									
---------------------	--	--	--	--	--	--	--	--	--

Serv-o-mecum E-a-1 E-a-2 E-a-3	Push button Drüktotts Touche pousseiro Drucktaaste Pulsador	Tune to Afstemmen op Syntoniser à Abstimmen auf Sintonizar a	Signal Signal Signal Signal Senal	Adjust Afregelen Réglér Abgleichen Ajustense	Indication Aanwijzing Indication Anzeige Indicación	
IP-MF-PI-ZF-PI (AM)	6	Max. kc/s	452 kc/s - g1B2 via 33 000 pF	S32, S31 S27, S26	Max. output	
		Min. kc/s	452 kc/s	S13	Min. output	
RF-circuits HF-kringen Circuits HF (AM) HF-Kreise Circuitos HF	5	Max. kc/s	12 Mc/s	g1B2	C28	Max. output
		Min. kc/s	5,95 Mc/s		S19, S21	
		Max. kc/s	12 Mc/s		C28	
	6	Max. kc/s	1620 kc/s	C25	S22, S23	
		Min. kc/s	510 kc/s			
	4	Max. kc/s	280 kc/s	C27	C25	
		7 Mc/s	7 Mc/s	S15, S16		
	5	11 Mc/s	11 Mc/s	C24		
		550 kc/s	550 kc/s	S17		
		1500 kc/s	1500 kc/s	C26		
	4	180 kc/s	180 kc/s	S18		
	IP-MF-PI-ZF-PI (FM)	8	87,2 Mc/s	10,7 Mc/s	g1B2 ↓	
via				g1B2 ↓	S28, S25, S24	Max. D.V.
1500 pF				g1B1	S12, S10	Max. D.V.
RP-HF-HF-HF-RF (FM)	8	87,2 Mc/s	87,2 Mc/s	S7	Max. output	
		104,3 Mc/s	104,3 Mc/s	C9		
		96 Mc/s	96 Mc/s	C16		



TRA 229

S	1234 5	6	7	8	9	10	11	12	13	14	15	16	17	18	19	20	21	22	23	24	25	26	27	28	29	30	31	32	33	34	35	36	37	38	39	40	41	42	43	44	45	46	47	48	49	50	51	52	53	54	55	56	57	58	59	60	61	62	63	64	65	66	67	68	69	70	71	72	73	74	75	76	77	78	79	80	81	82	83	84	85	86	87	88	89	90	91	92	93	94	95	96	97	98	99	100				
C	1	2	3	4	5	6	7	8	9	10	11	12	13	14	15	16	17	18	19	20	21	22	23	24	25	26	27	28	29	30	31	32	33	34	35	36	37	38	39	40	41	42	43	44	45	46	47	48	49	50	51	52	53	54	55	56	57	58	59	60	61	62	63	64	65	66	67	68	69	70	71	72	73	74	75	76	77	78	79	80	81	82	83	84	85	86	87	88	89	90	91	92	93	94	95	96	97	98	99	100
R	1	2	3	4	5	6	7	8	9	10	11	12	13	14	15	16	17	18	19	20	21	22	23	24	25	26	27	28	29	30	31	32	33	34	35	36	37	38	39	40	41	42	43	44	45	46	47	48	49	50	51	52	53	54	55	56	57	58	59	60	61	62	63	64	65	66	67	68	69	70	71	72	73	74	75	76	77	78	79	80	81	82	83	84	85	86	87	88	89	90	91	92	93	94	95	96	97	98	99	100



TOETS  
TOUCHE  
DRUCKTASTE  
PULSADOR

- 900/...
- 901/...
- 901/W
- 902/...
- 908/P...
- 904/...
- 905/...
- 906/...
- 905/L...
- 906/V...
- 907/...
- 908/...
- 904/P...
- 905/D...

TRA 228

TRA 209

JR 006 77 (/00)	Cabinet Kast Ebenisterie	JR 362 56 (1,9)	Knob Knop	JR 322 63	Roller balance control, lower Rol balansregelaar , onder
JR 012 05 (/01)	Cobhouse Mueble	FR 252 55 (2,10)	Boaton		Rouleau inférieur contr. de balance
		JR 657 01 (1,16)	Knopf Botón		Rolle Balanceregler, unten Rollo inferior contr. de balance
JR 670 40	Loudspeaker grill Luidsprekerrooster Grille haut-parleur	JR 255 29	Rear panel Achterwand Panneau arrière		Roller balance control, upper Rol balansregeling, boven
JR 220 91	Skala Cuantante	JR 399 29	Rückwand Panel posterior	JR 322 64	Rouleau supérieur contr. de balance
(A) JR 664 41	Dial		Connecting plate, rear Aansluitplaat, achterzijde		Rolle Balancereglung, oben
(B) JR 664 36	Scheal		Plaqué de connexion, côté arrière Anschlussplatte, Rückseite		Rollo superior contr. de balance
(C) JR 664 37	Gradan		Placa de conexión, lado posterior	JR 997 71	Balance indicator strip Balansindicatiestrip
(D) JR 664 39	Skala	JR 467 12	Voltsge adapter Spanningsomschakelaar		Barrette d'indication de balance
			Carroussel de tension Spannungswähler		Balanceindikatorstreifen
JR 670 39	Ornamental strip Sierstrip Bande enjoliveuse Zierstreifen	JR 677 35	Selector de tensión		Platina del indicador de balance
			Plata behind dial Plaque derrière, schaal	JR 576 90	Tons indicator disc Toonmaatstipschijf
			Plaque behind knob Plaque hinter Knopf		Disque d'indication de son
			Placa detrás cuadrante		Tonhöhenanzeiger Dato del indicador de tonalidad
JR 674 16	Window, EM 64-balance Venster, EM 64-balans Fenster, EM 64-Balance Fenster, EM 64-Balance Ventanilla, EM 64-balance	JR 213 22 (9 x) 965/2,05x14 (2 x)	Fulle, on front Kol, op front Rouleau, sur front Seilrolle, auf Front Rolle, sobre frente	JR 652 82	Spring, wave range switch Veer, vellingteschakelaar Resort, comm. de gammes Feder, Wellenbereichschalter Resorte, comm. de mórgenes
			Fulley, on switch and duplex Rol, op schak. en duplex Rouleau sur comm. et duplex Seilrolle, auf Schalter und Duplex Rolle, sobre comm. y duplex		Perroceptor switch Perroceptorschakelaar Comm. de ferrocepteur Perroceptorsschalter Comm. de Ferroceptor
JR 674 16	Foot Voet	JR 212 00	Push button Druktoets Bouton poussoir Druckknaste Tecla	JR 186 33	FM unit FM-eenheid Unité FM UKW-Einheit Unidad FM
				JR 093 03	

Take original Service parts, then you are safe

Utilisez les pièces détachées d'origine - c'est plus sûr

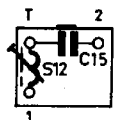
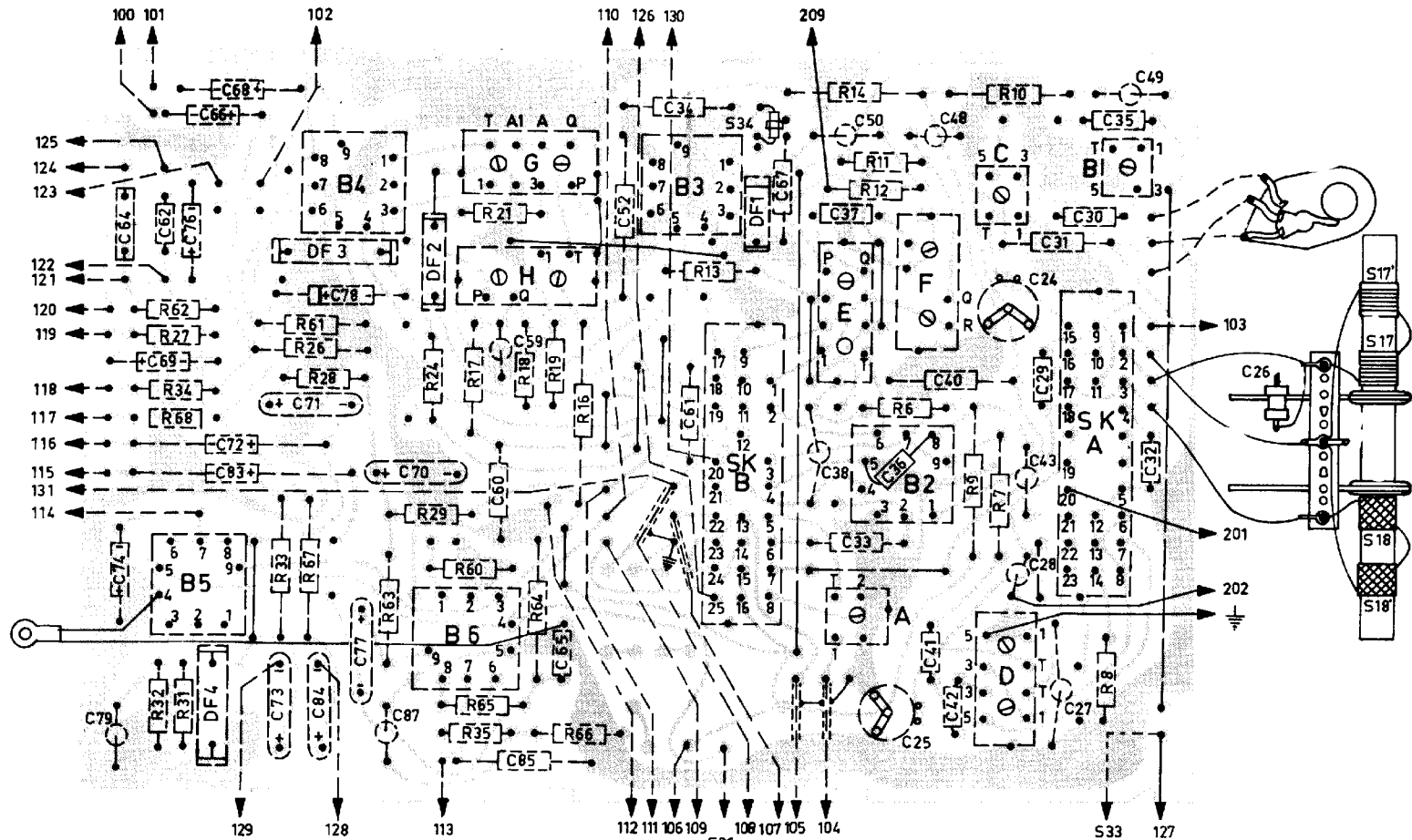
Nimm doch original Service Teile, dann geht man sicher

# Gebruik originele Service-onderdelen

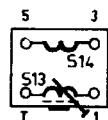
Para mayor seguridad - úsense las piezas de recambio primi

S12 } C39 }	JR 122 54	IP link circuit, FM MF-koppelkring, FM Circuit de couplage FI, FM ZF-Kopplungskreis, UKW Circuito de acoplo, FM	S26 } S27 } C46 } C47 }	IP band-pass filter, AM MF-Bandfilter, AM Filtre passe bande FI, AM ZF-Bandfilter, AM Filtro de pasabanda, FI, AM	S10 } S11 } S12 }	Mains transformer Netransformator Transformateur de réseau Netztransformator Transformador de red
S13 } S14 }	JR 122 32	Wave trap coil and choke Sperrling-en smoorspoel Circuiti bobina cu spii Sperrkrei Sperrule und Drossel Bobina de trampa de onda y choke	S28 } S29 } S30 } C33 }	Radio detector Radiodetektor Détecteur de rapport Radiodetektor Detector de razón	C22 } C23 }	Variable capacitor Variabele condensator Condensateur variable Drehkondensator Condensador variable
S15 } S16 }	JR 133 41	Input coil, SW Ingangspoel, AG Bobine d'entrée, OC Eingangspoel, AH Bobina de entrada, OC	S31 } S32 } C54 } C55 }	IP band pass filter, AM MF-Bandfilter, AM Filtre passe bande FI, AM ZF-Bandfilter, AM Filtro de pasabanda FI, AM	R50-51 } R52-53 }	JR 377 66
S17 } S17 } S18 } S18 }	JR 132 86	Ferroreceptor, MW-LW Ferroreceptor, MG-IG Ferroreceptor, PO-OO Ferroreceptor, MW-LW Ferroreceptor, OM-OL	S33 } R14 } S34 } S35 }	Choke Smoorspoel Self Drossel Choke	R54 } R55 } R56 } R57 } R58 } R59 }	JR 377 69 JR 377 77 C 005 CC/60E C 005 CC/30E
S19 } S20 } S21 } S22 } S23 }	JR 122 24	Oscillator coil, LW-MW-SW Oscillatortroepel, LG-MG-KG Bobine d'oscillateur, MO-PO-OC Oscillatortroepule, LW-MW-KW Bobina de oscilador, OM-OL-OC	S36 } S37 } S38 }	Ferroxcube bead Ferroxcubekraal Perle de ferroxcube Ferroxcubeperle Perla de ferroxcube	C29 } C30 } C32 } C18 }	C 285 AB/D500E C 285 AB/D195E C 285 AB/D150E 909/26,4
S24 } S25 } C4 } C45 }	JR 122 53	IP band pass filter, FM MF-Bandfilter, FM Filtre passe bande FI, FM ZF-Bandfilter, UKW Filtro de pasabanda FI, FM	S43 } S44 } S45 } S46 } S47 } S48 }	IS transformer IS-transformator Transformateur de h-p IS-Transformator de Transformador de altavoz	C80 } C81 } C82 } R15 } C51 } R23 } C58 }	913/W50+50+50 E 551 AA/25+44 E 551 AA/50+40 E 551 AA/70+32 E 553 AA/49+40
R10	BB 305 08B/12K		R11, 16	E 001 AD/AGE2	R30 } C63 }	
R40, 40a	E 001 AK/A680E		R41	E 001 AK/A56E	R22 } C56 } C57 }	

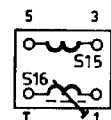
S	G.H.										34	E.	A.F.	C.D.	B.													
C	79.74.64.69.62.76.66.68.72.83.73.71.84.78.77.87.	70.	60.	85.	59.	65.	52.	34.	61.	67	38.	37.	38.	50.	36.	25.	41.	48.	40.	42.	4.3.	28.	31.	30.	27.	35.	32.	26.
R	62.27.34.68.32.31.	33.	67.	26.	28.	29.	24.	60.	65.	35.	17.	21.	18.	19.	16.	65.	13.	14.	11.	12.	6.	9.	7.	10.	8.			



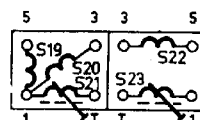
A



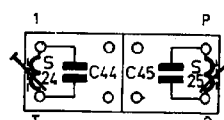
B



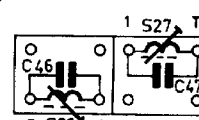
C



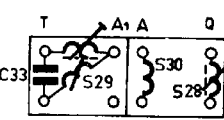
D



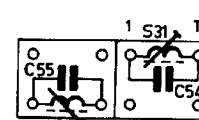
E



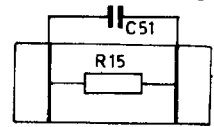
F



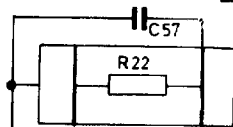
G



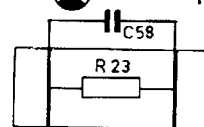
H



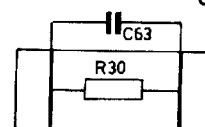
DF1



DF2



DF3



DF4

